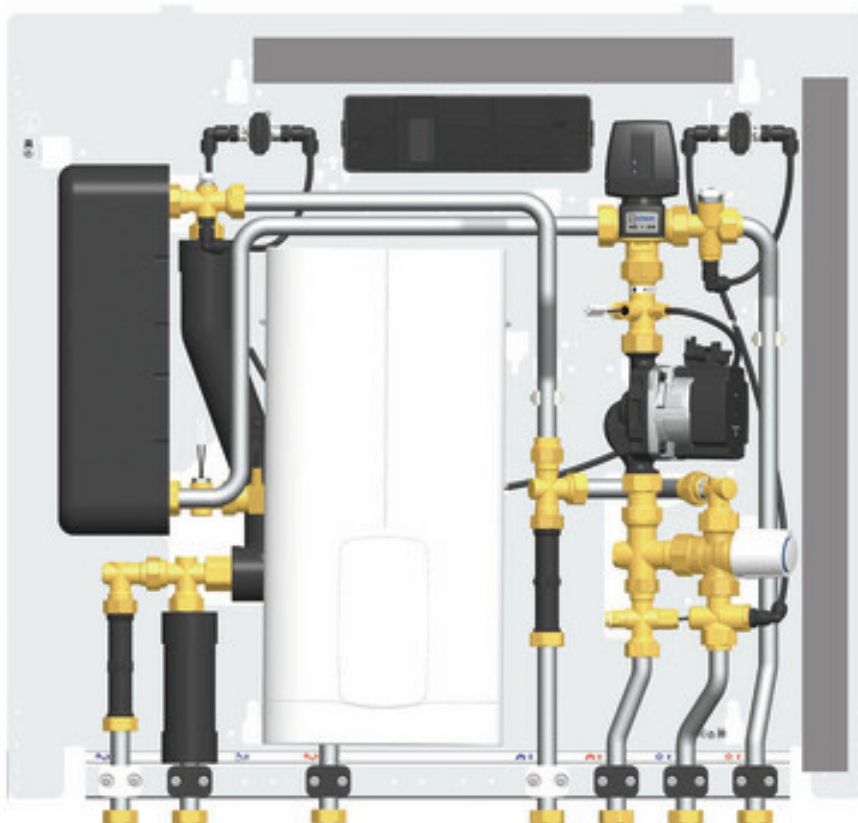





## Commissioning instructions HomeBloC® Digital WR / WF / WRF / WRF-E Fully electronic



### Notice

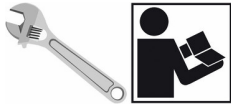
These instructions are only intended to provide an overview. It is a supplement and does **not** replace the installation and operating instructions!

The instructions and warnings described in the main instructions must be observed!

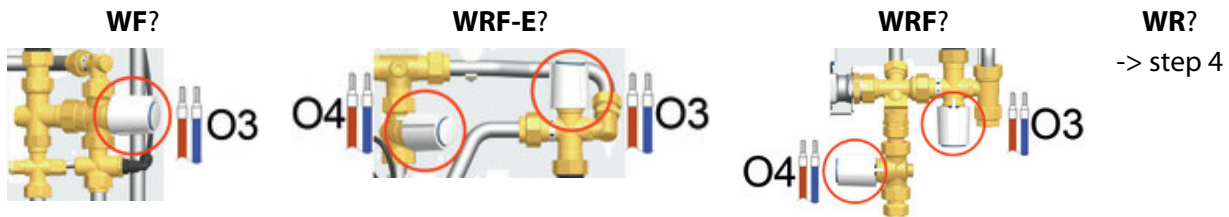
Steps labelled with  must be read in the respective separate instructions.

# 1 Electrical installation

## 1. Assembly



## 2. Terminals O3 and O4



## 3. Zone 1 - 5 (floor distribution manifold)



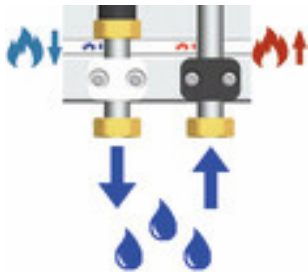
## 4. Room control unit (all HomeBloC® Digital)



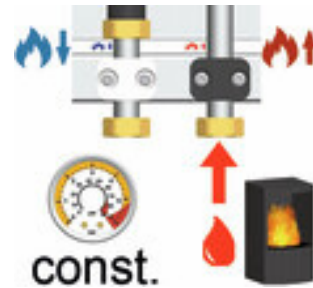
## 2 Commissioning

### 2 Commissioning

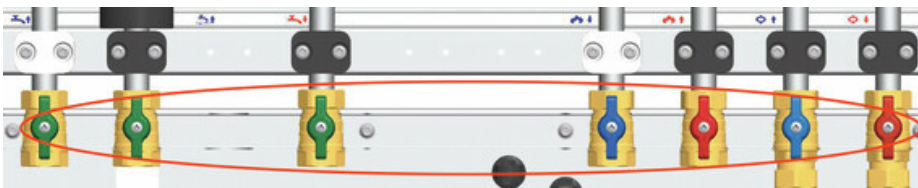
#### 1. Flush and fill



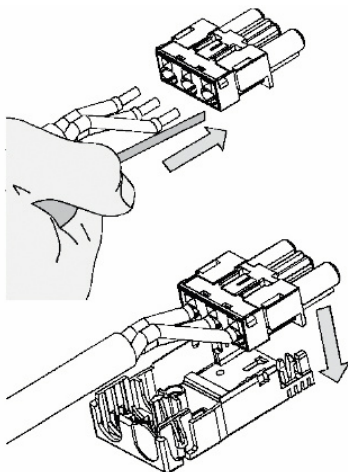
<- flush fill ->



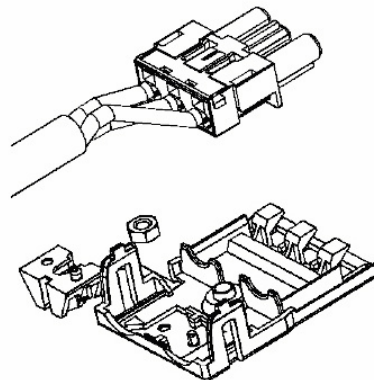
#### 2. Check ball valves



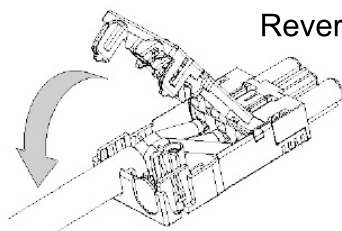
#### 3. Establish power supply



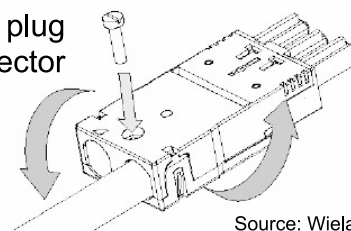
Mounting the strain relief



Source: Wieland

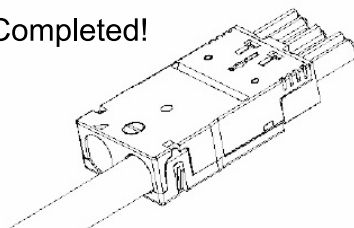


Reverse the plug connector

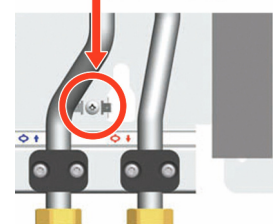
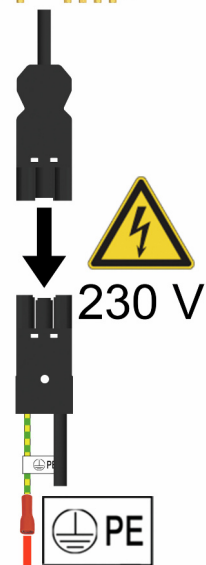
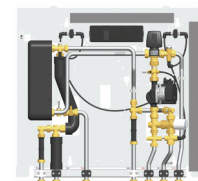


Source: Wieland

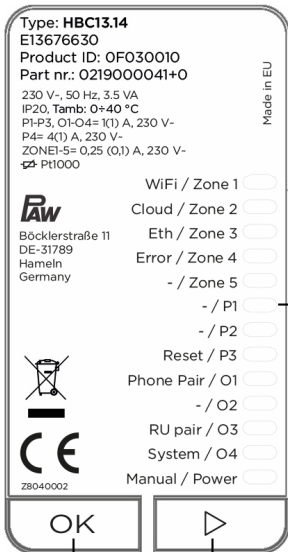
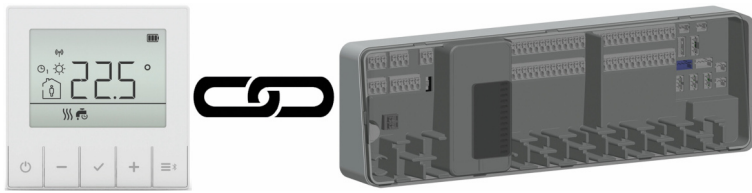
Completed!



Source: Wieland



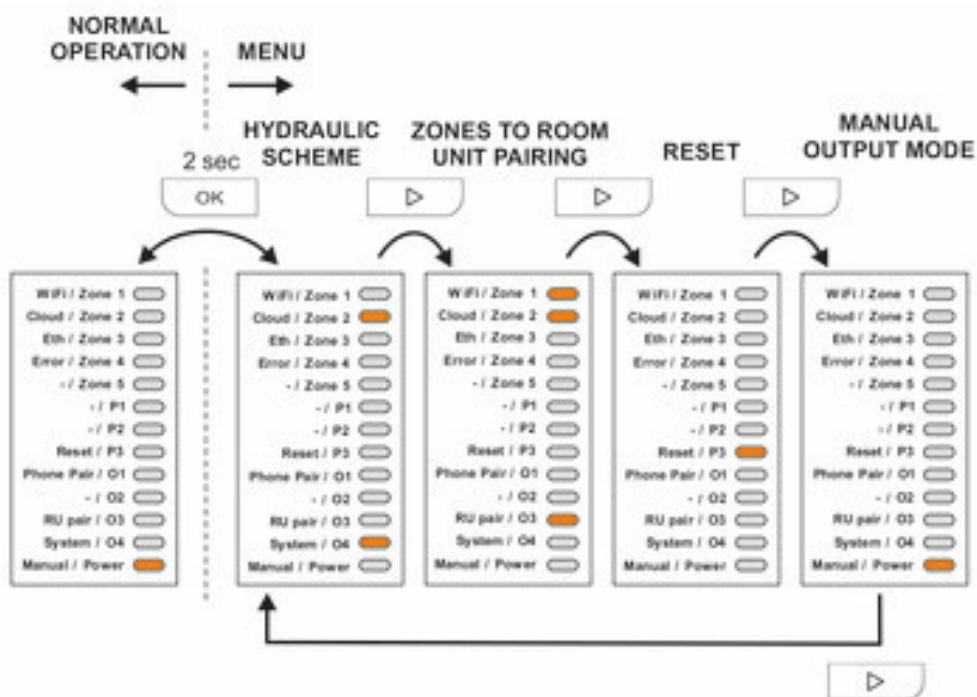
### 4. Coupling



- LED lights up: indicates menu / zone connected to room control unit
- LED flashes (long interval): Pairing mode zone with room control unit
- LED is off

LEDs for signalling operation

Confirmation button  
Selection button ("next")







Main instructions HomeBloC® Digital



PC software HomeBloC® Digital  
<https://tinyurl.com/PAW-HomeBloC-Digital>



Instructions controller



Instructions room control unit

### 3 Acceptance / commissioning protocol

### 3 Acceptance / commissioning protocol

Customer:		Address, telephone, e-mail:	
Specialist trade company:		Address, telephone, e-mail:	
Commissioning by:			
Object:		Living area: ..... m <sup>2</sup>	Heating requirements: ..... kW
Flat station type:		Item no.:	
		Serial number:	
<b>Commissioning work</b>		<b>Completed</b>	
Checks before commissioning		<input type="checkbox"/>	
Flushing		<input type="checkbox"/>	
Filling		<input type="checkbox"/>	
Venting		<input type="checkbox"/>	
Check setting values		<input type="checkbox"/>	
Heating circuits:	<input type="checkbox"/> Radiator <input type="checkbox"/> Floor		
Values:	Domestic hot water temperature: ..... °C		
	Flow temp.: ..... °C	Return temp.: ..... °C	Radiator circuit
	Flow temp.: ..... °C	Return temp.: ..... °C	Floor circuit
	Safety temperature limiter setting value: ..... °C		
	Differential pressure setting value:	Radiator circuit: ..... mbar	Floor circuit: ..... mbar
Remarks / agreements:			
Commissioning has been carried out correctly.			
Date	Signature customer	Signature specialised craftsman	

Item no. 9912xxxx10x-qug-en

Translation of the original instructions

We reserve the right to make technical changes without notice!

Printed in Germany – Copyright by PAW GmbH & Co. KG

PAW GmbH & Co. KG

Böcklerstraße 11

31789 Hameln, Germany

[www.paw.eu](http://www.paw.eu)

Phone: +49-5151-9856-0

Fax: +49-5151-9856-98