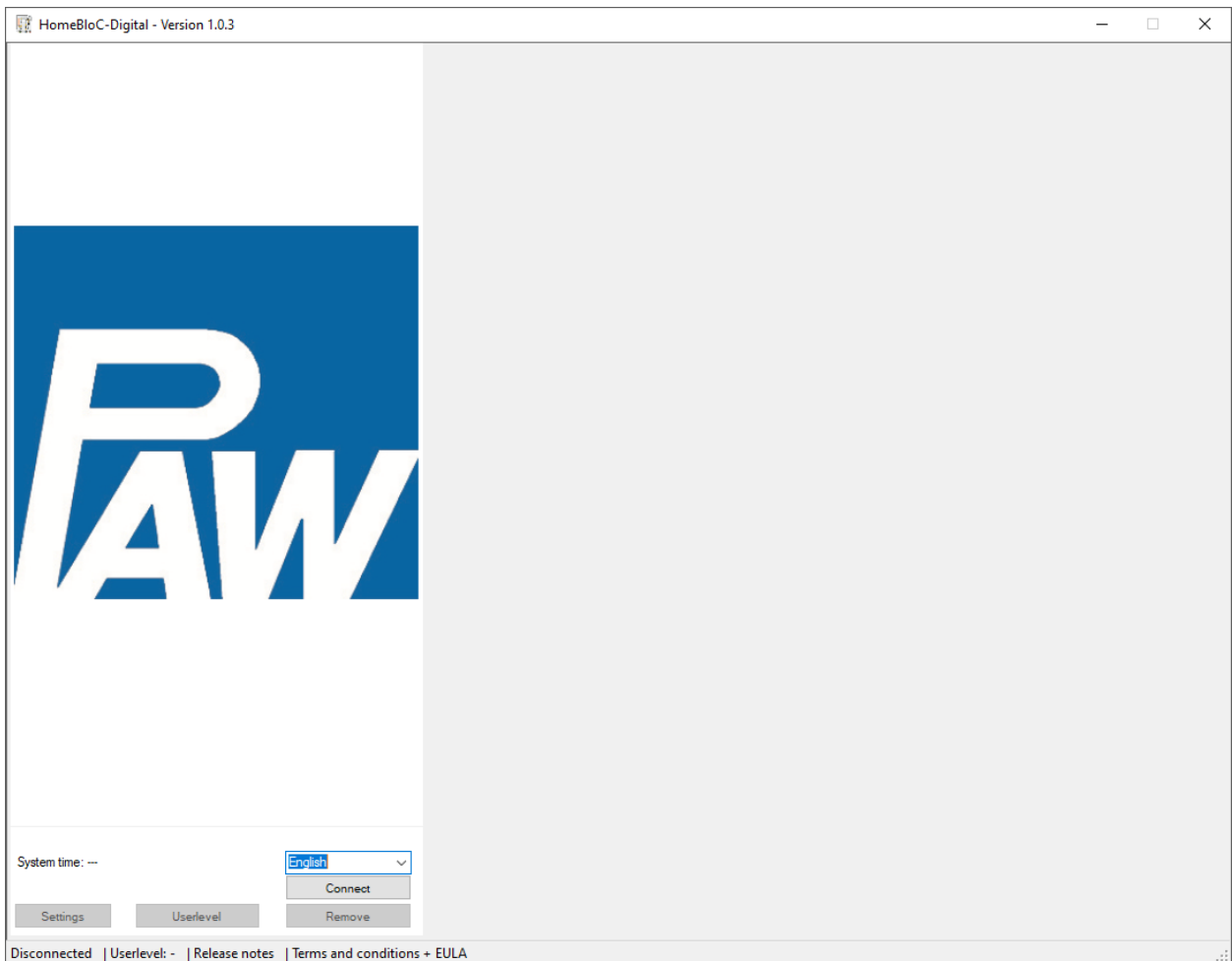




Operation instructions

PC software for HomeBloC® Digital



Contents

1	General Information.....	3
1.1	Scope of these instructions	3
1.2	Designated use.....	3
2	Product description.....	3
3	Installation.....	3
4	Update.....	4
5	Start screen.....	4
6	Connection.....	5
7	Main view.....	7
7.1	Footer	7
7.2	Hydraulic image	8
7.3	Hydraulic scheme	8
7.4	Measured values.....	9
7.5	Room control unit.....	10
7.5.1	Time programmes	11
7.6	Outdoor temperature.....	13
7.7	User level.....	13
7.7.1	Change user level	13
7.7.2	Change password	14
8	Settings.....	15
8.1.1	Hide parameter number	15

1 General Information



Read these instructions carefully before installing and operating the software. Save these instructions in the vicinity of the installation for future reference.

1.1 Scope of these instructions

These instructions describe the function, installation and operation of the additional PC software for the PAW flat station HomeBloC® Digital in the versions WR, WF, WRF-E and WR + DLE (instantaneous water heater), WF + DLE and WRF + DL.

1.2 Designated use

The PC software is only intended for use with a PAW flat station HomeBloC® Digital. Improper usage excludes any liability claims.

2 Product description

This PC software is an additionally available software for making specific specialised settings. The installation and settings on the flat station should only be carried out by a specialist.

3 Installation

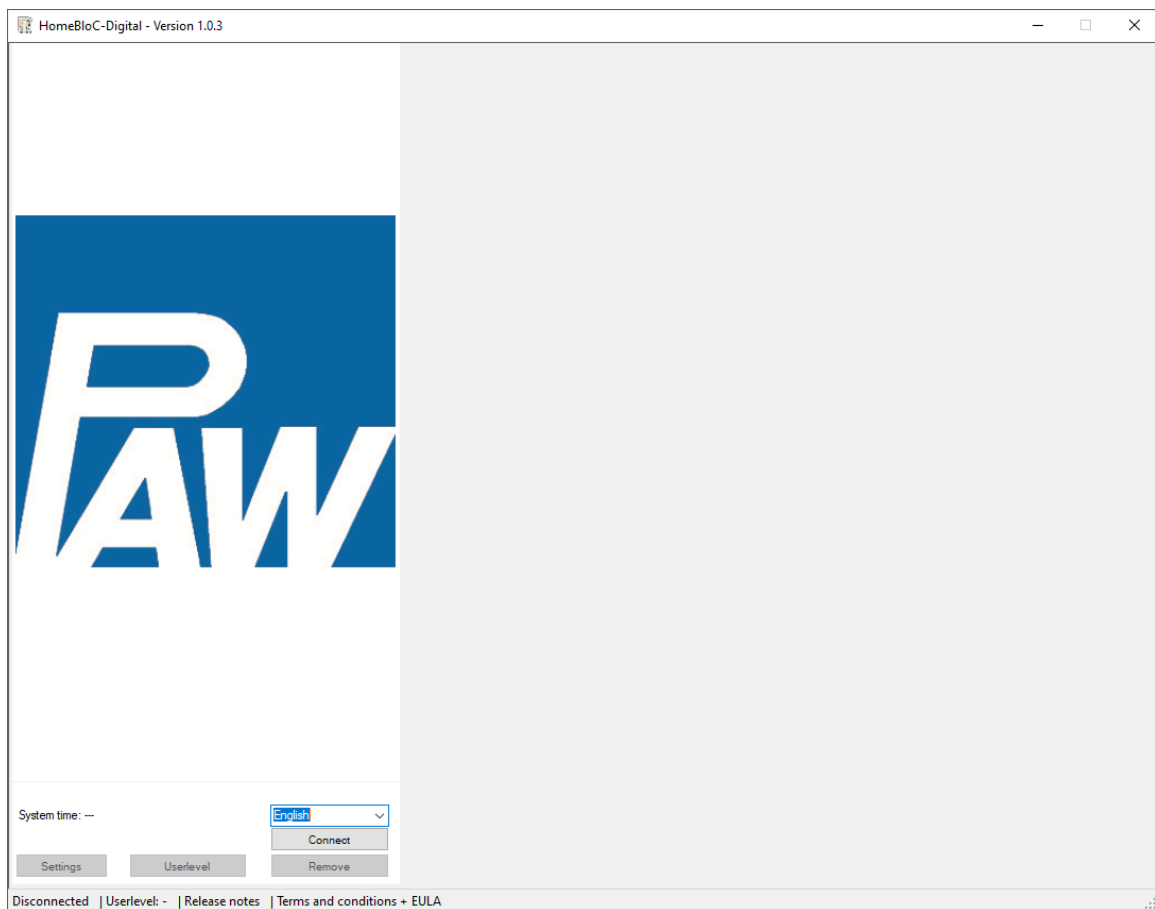
1. Download the zip file from the website. You will find the corresponding QR code in the installation and operating instructions for the flat station HomeBloC® Digital.
Alternatively, you can also use the following link:
<https://www.paw.eu/media/downloads-pdf/Software/HomeBloC-Digital/HomeBloC-Digital.zip>
2. Create a new folder for the files.
3. Unzip the zip file into the new folder.
4. Right-click on the "HomeBloC-Digital.exe" file and select "Pin to Start".


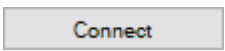
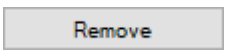
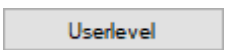
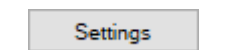
4 Update

When the programme starts, it automatically checks whether a newer programme version is available. An Internet connection is required for this.

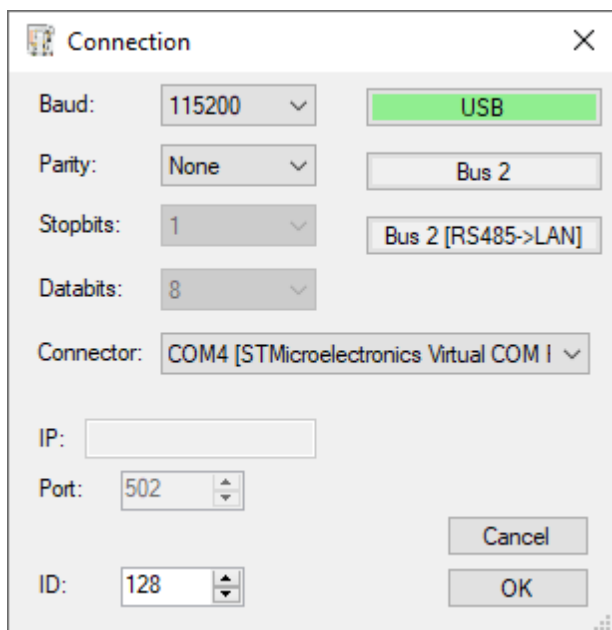
If a newer version is available, you will be asked whether you want to install it. The software is then installed automatically. This check is carried out each time the programme is started.

5 Start screen



Symbol	Description
	Language selection - must be set before connection.
	Establishing a connection to a controller
	Disconnecting an active connection
	Changing the user level
	Setting the system parameters

6 Connection



Communication with the controller is carried out via the Modbus protocol.

Three connection types are preset.

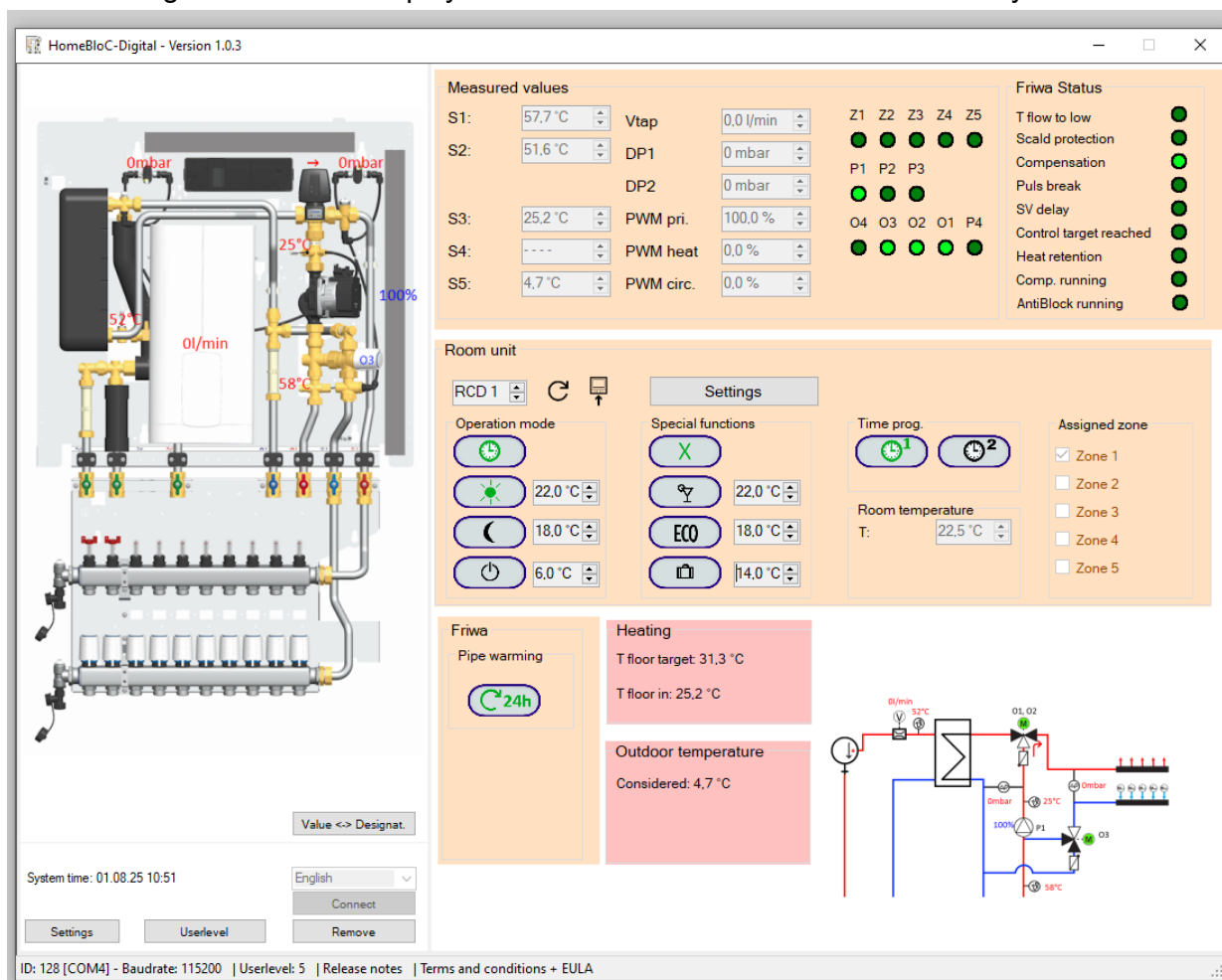
Connection type	Description
	The connection is made via the USB connection on the controller.
	The connection is made via the BUS2 connection on the controller. A USB ↔ RS485 converter is required on the PC for this.
	<p>The connection is made via the network using an RS485 LAN adapter (e.g. SMG-5400 or SMG-5410).</p> <p>The RS485 connection of the adapter is connected to BUS2 of the controller.</p>

The preset connection settings can be adjusted accordingly.

Symbol	Description
<input type="text" value="115200"/>	Baud rate of the connection
<input type="text" value="None"/>	Parity
Connector: <input type="text" value="COM4 [STMicroelectronics Virtual COM I"/>	Connection via which the connection is to be established. To update the existing connection options, the "Refresh" entry can be selected under this item.
IP: <input type="text"/>	IP under which the LAN → RS485 adapter can be reached in the network. To enable this field, "LAN" must be selected under "Connection type".
Port: <input type="text" value="502"/>	Port of the LAN → RS485 adapter. To enable this field, "LAN" must be selected under "Connection".
ID: <input type="text" value="128"/>	Modbus ID of the corresponding controller

7 Main view

The following information is displayed after a connection has been successfully established:



Area / symbol	Description
	Change the displayed information within the station screen and the scheme. You can switch between value and designation.

7.1 Footer

Area / symbol	Description
	Connection settings to the controller
	Currently set user of the controller
	Click to display the Release Notes
	Click to display the Terms and Conditions + EULA

7.2 Hydraulic image

Area / symbol	Description
	<p>Station image of the set station. Click on it to display it in a separate window.</p>

7.3 Hydraulic scheme

Area / symbol	Description
	<p>Scheme of the set station. This can be displayed in a separate window by clicking on it.</p>

7.4 Measured values

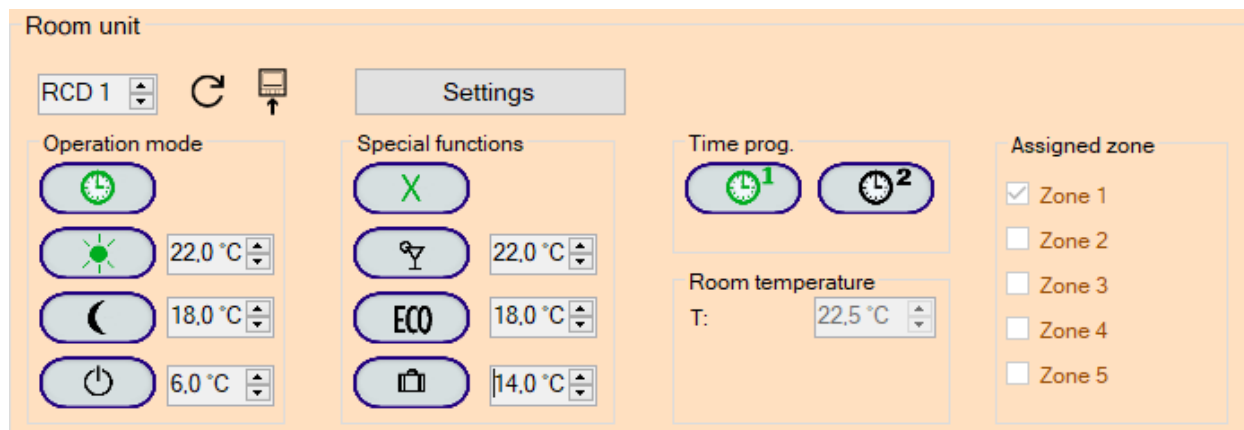
Measured values				Friwa Status						
S1:	57,7 °C	Vtap	0,0 l/min	Z1	Z2	Z3	Z4	Z5	T flow to low	<input checked="" type="checkbox"/>
S2:	51,6 °C	DP1	0 mbar	P1	P2	P3			Scald protection	<input checked="" type="checkbox"/>
		DP2	0 mbar	O4	O3	O2	O1	P4	Compensation	<input checked="" type="checkbox"/>
S3:	25,2 °C	PWM pri.	100,0 %						Puls break	<input checked="" type="checkbox"/>
S4:	----	PWM heat	0,0 %						SV delay	<input checked="" type="checkbox"/>
S5:	4,7 °C	PWM circ.	0,0 %						Control target reached	<input checked="" type="checkbox"/>
									Heat retention	<input checked="" type="checkbox"/>
									Comp. running	<input checked="" type="checkbox"/>
									AntiBlock running	<input checked="" type="checkbox"/>

Display of the current sensor data and actuators.

Area / symbol	Description
	Value is in automatic mode
	Manual mode active
	Manual mode is activated / deactivated by left-clicking on the designation (here S1).
	Output switched off.
	To activate / deactivate manual mode, left-click on the designation of the output.
	Output switched on.

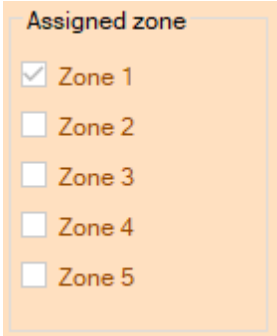
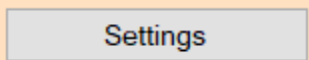
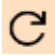


7.5 Room control unit

The data of the currently selected room control unit (RCD) is displayed in this area. The parameters of the room control unit can also be changed here.




Area / symbol	Description
	Time programme of the zone(s) active
	Day mode active
	Night mode active
	Heating of this zone switched off
	No special function active
	Party function active
	ECO function active
	Holiday function active
	Time programme 1 selected
	Time programme 2 selected

7 Main view

	<p>Display which zone(s) this room control unit is/are assigned to.</p>
	<p>Set the parameters of the room control unit.</p>
<p style="text-align: center;">Area / symbol</p>	<p style="text-align: center;">Description</p>
	<p>Reload room control unit data.</p>
	<p>Transfer data to the room control unit.</p>
	<p>Not all data has been transferred to the room control unit yet.</p>

7.5.1 Time programmes

Select time programme: Left-click on the icon  or 

Set time programme: Right-click on the icon  or 

Set the time programme:

🕒 Time program 1 - RCD 1
✕

Start: 06:00 ▾	End: 22:00 ▾	Day: Monday - Friday ▾
Start: 07:00 ▾	End: 23:00 ▾	Day: Saturday - Sunday ▾
Start: --:-- ▾	End: --:-- ▾	Day: Monday ▾
Start: --:-- ▾	End: --:-- ▾	Day: Monday ▾
Start: --:-- ▾	End: --:-- ▾	Day: Monday ▾
Start: --:-- ▾	End: --:-- ▾	Day: Monday ▾
Start: --:-- ▾	End: --:-- ▾	Day: Monday ▾
Start: --:-- ▾	End: --:-- ▾	Day: Monday ▾
Start: --:-- ▾	End: --:-- ▾	Day: Monday ▾
Start: --:-- ▾	End: --:-- ▾	Day: Monday ▾
Start: --:-- ▾	End: --:-- ▾	Day: Monday ▾
Start: --:-- ▾	End: --:-- ▾	Day: Monday ▾
Start: --:-- ▾	End: --:-- ▾	Day: Monday ▾
Start: --:-- ▾	End: --:-- ▾	Day: Monday ▾
Start: --:-- ▾	End: --:-- ▾	Day: Monday ▾
Start: --:-- ▾	End: --:-- ▾	Day: Monday ▾
Start: --:-- ▾	End: --:-- ▾	Day: Monday ▾
Start: --:-- ▾	End: --:-- ▾	Day: Monday ▾
Start: --:-- ▾	End: --:-- ▾	Day: Monday ▾
Start: --:-- ▾	End: --:-- ▾	Day: Monday ▾
Start: --:-- ▾	End: --:-- ▾	Day: Monday ▾
Start: --:-- ▾	End: --:-- ▾	Day: Monday ▾
Start: --:-- ▾	End: --:-- ▾	Day: Monday ▾
Start: --:-- ▾	End: --:-- ▾	Day: Monday ▾
Start: --:-- ▾	End: --:-- ▾	Day: Monday ▾
Start: --:-- ▾	End: --:-- ▾	Day: Monday ▾
Start: --:-- ▾	End: --:-- ▾	Day: Monday ▾
Start: --:-- ▾	End: --:-- ▾	Day: Monday ▾
Start: --:-- ▾	End: --:-- ▾	Day: Monday ▾

1 Clear all

2 Cancel

3 Export

4 Import

5 Save

- 1: Delete all entries.
- 2: Close the window without saving.
- 3: Export the time programme to a file.
- 4: Import the time programme from a file.
- 5: Save the entered data.

7.6 Outdoor temperature

Outdoor temperature

Considered: 4,7 °C

The currently considered outdoor temperature is displayed here.

Source	Description
Local sensor	Connect the outdoor sensor to the S5 connection.
Network	Transmit outdoor temperature to the controller via Modbus.
Fallback	<p>Fallback value: -2 °C</p> <p>The fallback value is used if</p> <ul style="list-style-type: none"> a) no local sensor is connected b) no regular (parameter) outdoor temperature data is sent via Modbus.

7.7 User level

In this window, not only the current user level, but also the password of any user level can be changed. The window is displayed differently depending on whether the *"Change password"* checkbox is ticked or not.

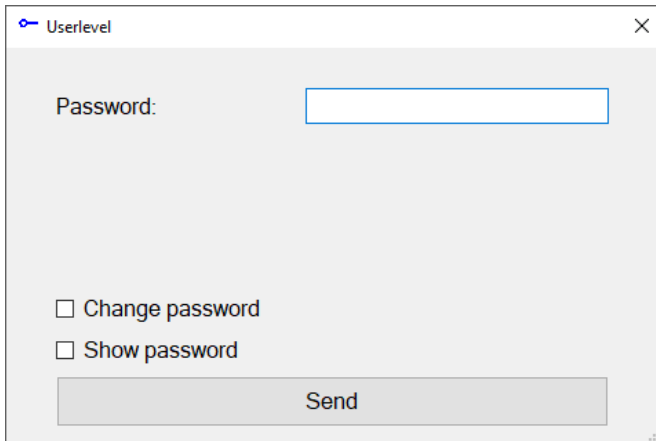
7.7.1 Change user level

The *Change password* checkbox must not be selected for this.

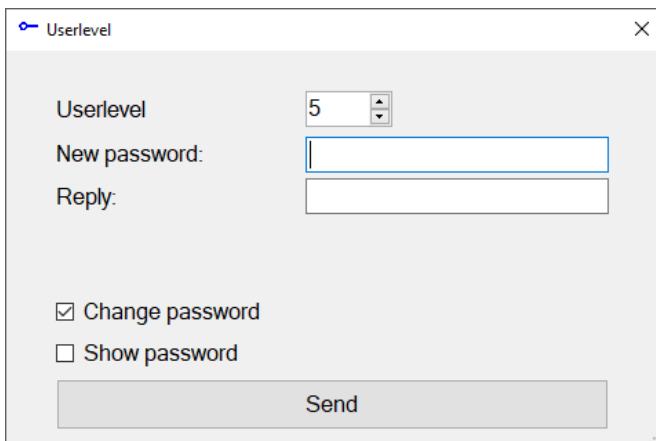
The password of the user level to which you want to change is entered in the password field.

The system automatically recognises the corresponding user level based on the password.

If a password is entered that is not known to the controller, the system automatically switches to user level 0 (customer). Alternatively, you can also switch to this user level by entering password 0.



7.7.2 Change password



The user level whose password is to be changed is selected in the *User level* field. Only the user levels that exist within the controller are displayed here.

In order for the password of a user level to be changed, the currently set user level of the controller must be at least as large as the user level to be changed.

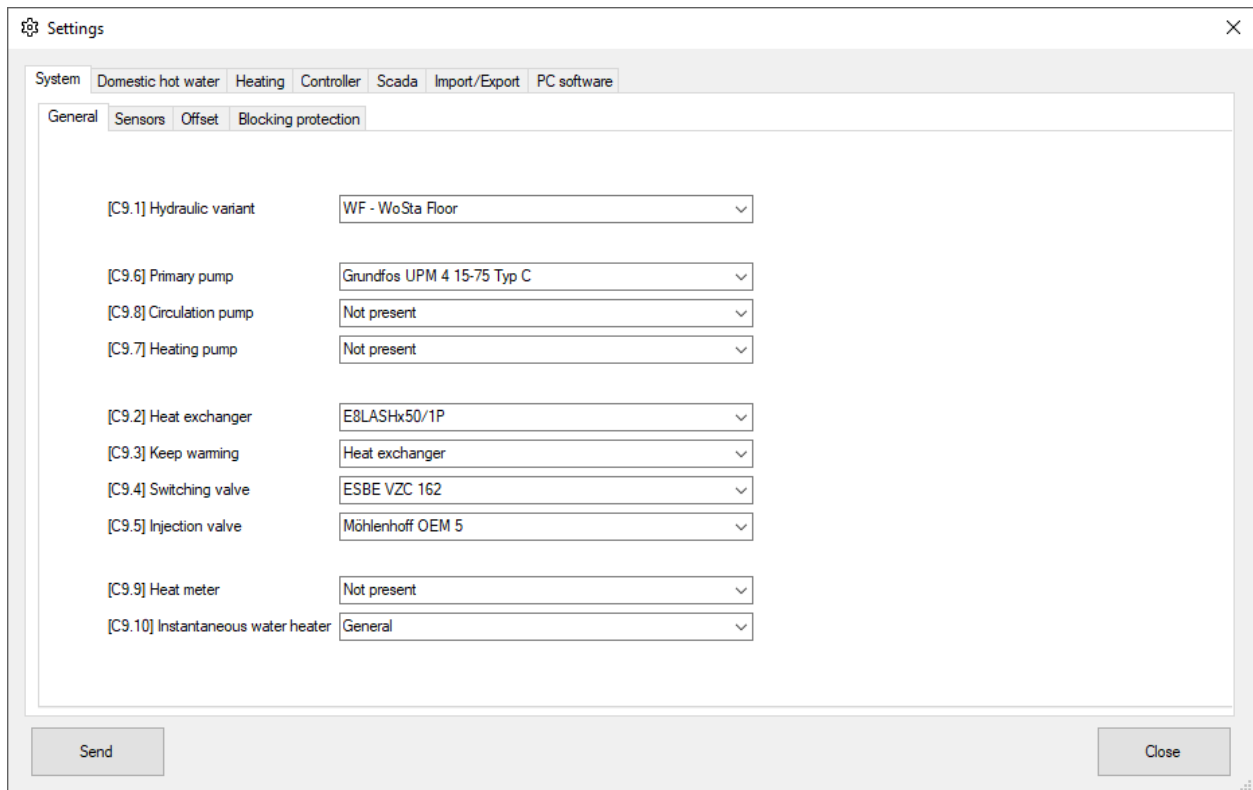
Example 1: User levels 5 and 10 are available for selection. User level 5 is currently set in the controller. This only makes it possible to change the password for user level 5.

Example 2: User levels 5 and 10 are available for selection. User level 10 is currently set in the controller. This makes it possible to change the password for user levels 5 and 10.

Notice

If an attempt is made to change the password for user level 10 in example 1, no message appears. The controller automatically ignores the change.

8 Settings



Depending on the set user level, the corresponding system parameters can be set or looked up here. The meaning of the individual parameters can be found in the controller instructions.

The following can be set in this area under the "PC software" tab:

8.1.1 Hide parameter number

This parameter controls the display of the parameter designation.

Parameter	Description
<input checked="" type="checkbox"/> Hide parameter number	Hydraulic variant WF - WoSta Floor
<input type="checkbox"/> Hide parameter number	[C9.1] Hydraulic variant WF - WoSta Floor

PAW GmbH & Co. KG
Böcklerstraße 11
31789 Hameln, Germany

www.paw.eu
Phone: +49 5151 9856 - 0
Fax: +49 5151 9856 - 98